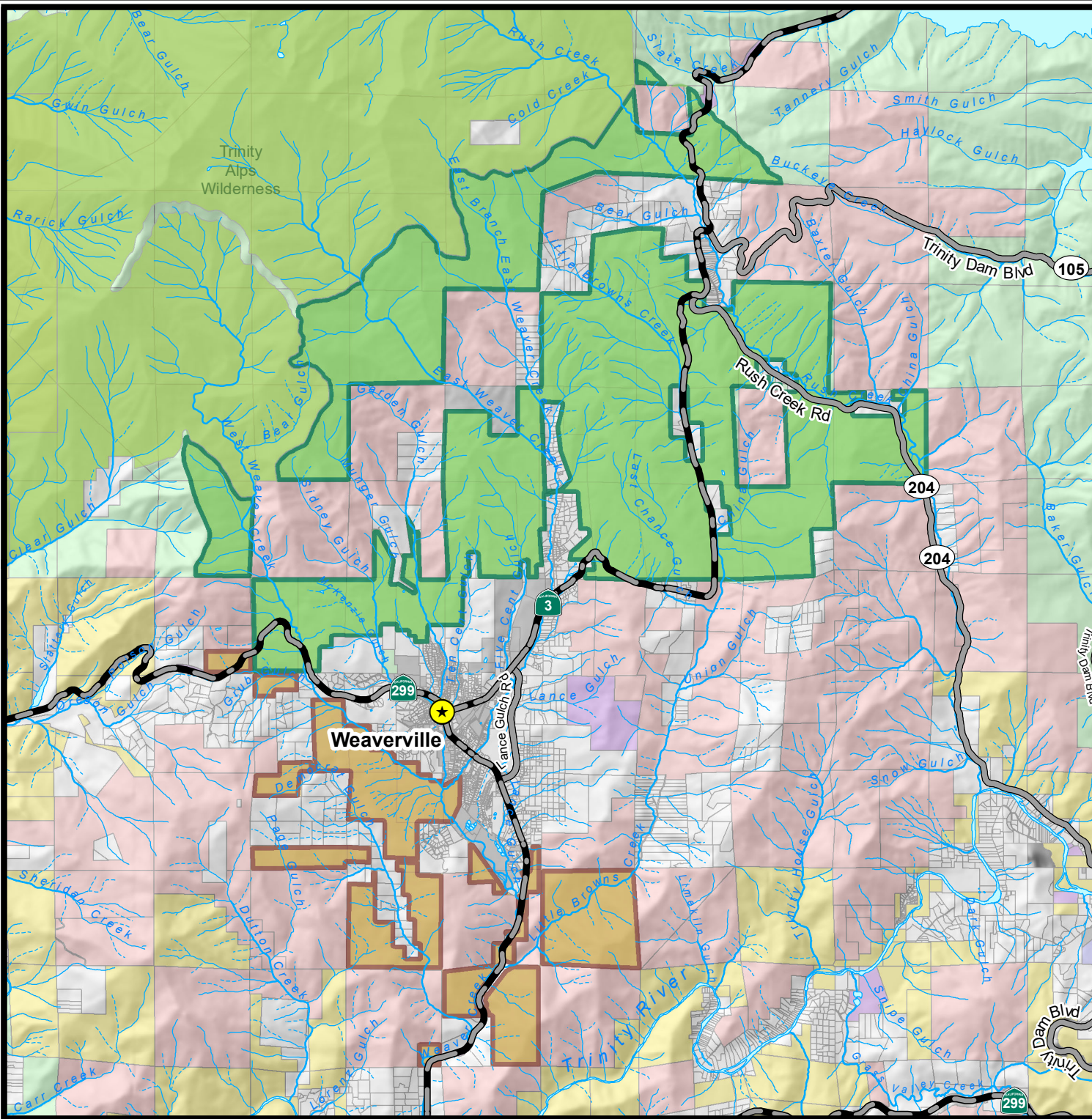


Weaverville Community Forest



WCF Boundaries

- Bureau of Land Mgmt Boundaries – 3,115 Acres
- US Forest Service Boundaries – 11,848 Acres

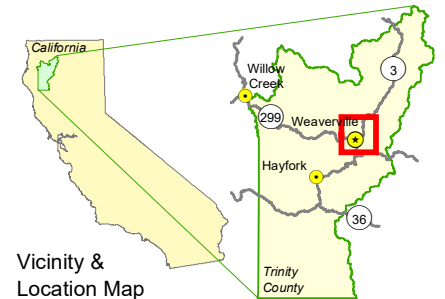
Ownership

- Private / Other
- Private: Timber Production
- Municipal Services
- State of California
- US Bureau of Reclamation
- US Bureau of Land Management
- US Forest Service

Roads

- Highway
- Paved

Wilderness Area



Scale: 1 = 92,000
 WCF_2018_Boundaries_8-5x11.mxd December 13, 2018

