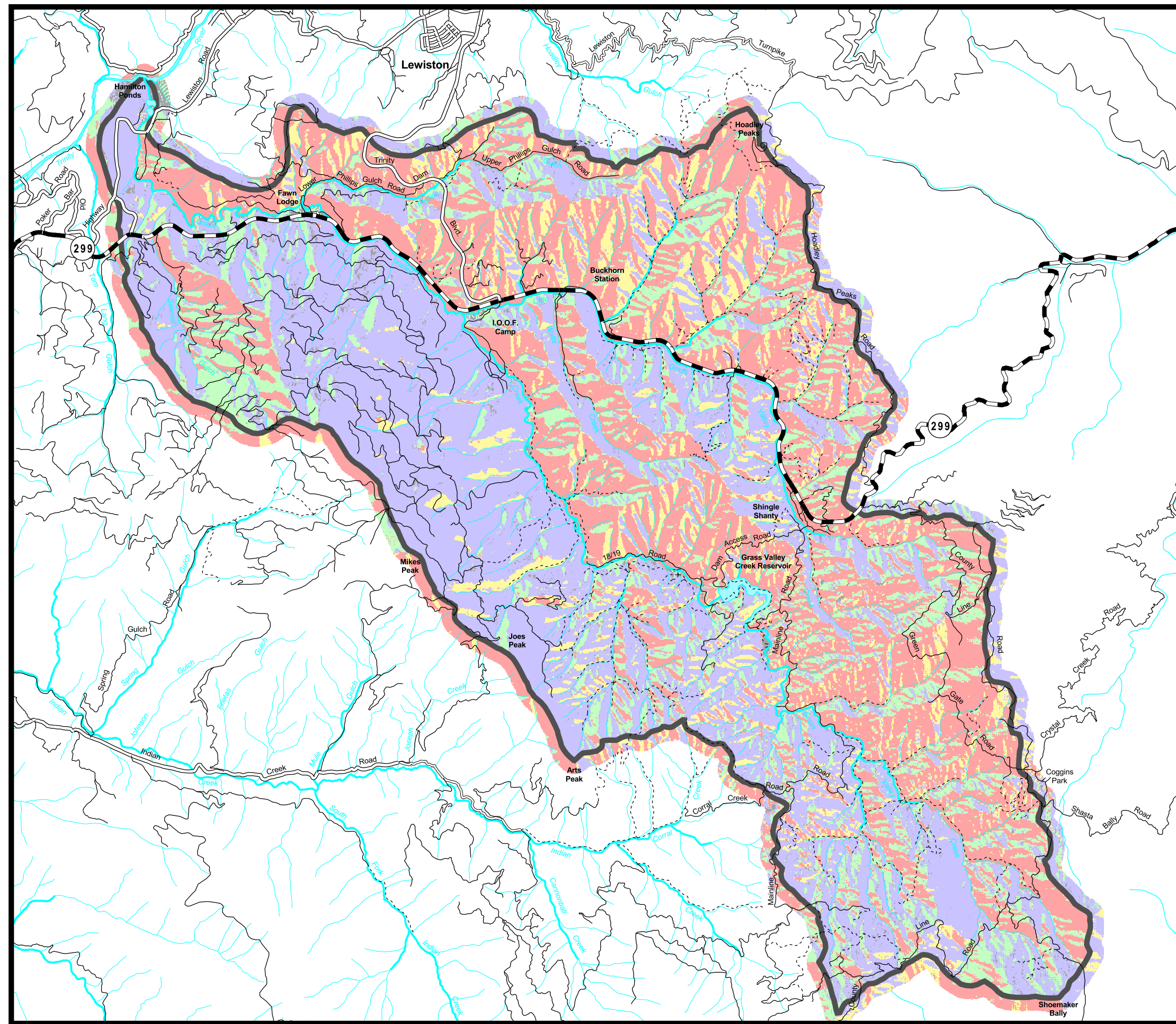


Grass Valley Creek Aspect



Aspect Classes

- North to Easterly (337.5 - 112.5 Degrees)
- Northwest (292.5 - 337.5 Degrees)
- Southeast (112.5 - 157.5 Degrees)
- South to Westerly (157.5 - 292.5 Degrees)
- Flat
- No Data

Roads

- Highway
- Paved
- Rocky
- Native
- Undrivable

Streams

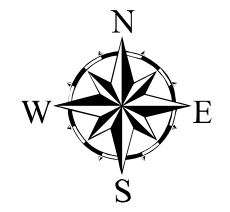
- Perennial
- Intermittent

Water Bodies

- Water Bodies

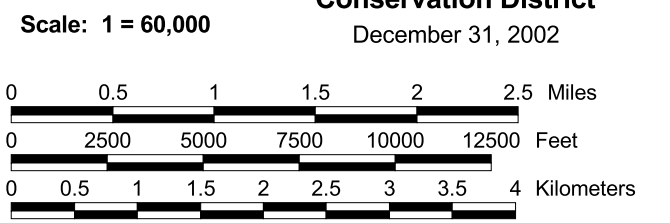
Watershed Boundry

- Watershed Boundry

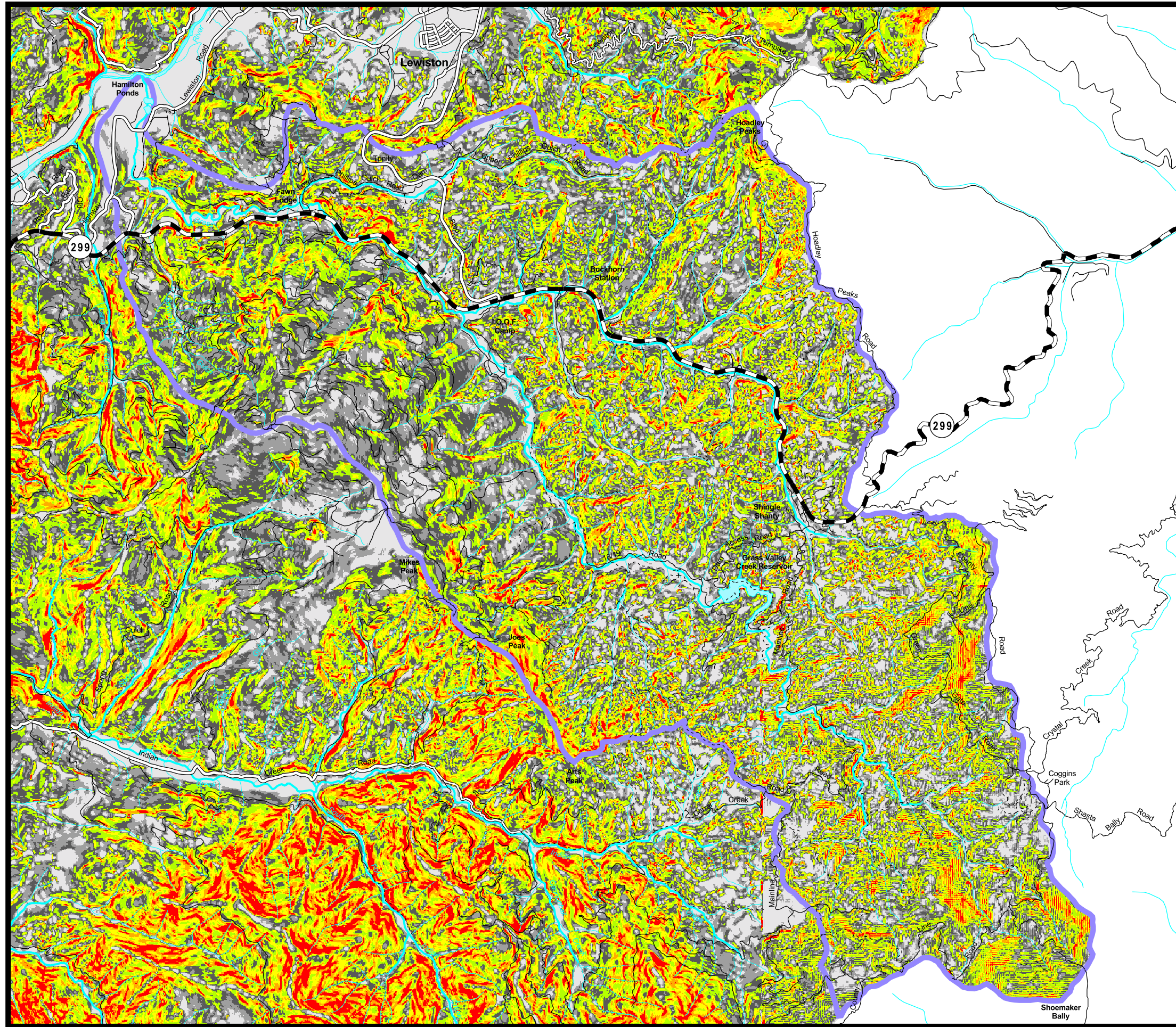


Presented By
Kenneth Baldwin, RPF 1855








Prepared By
Trinity County Resource Conservation District
December 31, 2002








Grass Valley Creek Slope Class





Slope Classes



-  0 - 20%
-  20 - 30%
-  30 - 40%
-  40 - 50%
-  50 - 60%
-  60 - 70%
-  > 70%

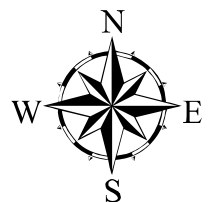
Roads

-  Highway
-  Paved
-  Rocked
-  Native
-  Undrivable

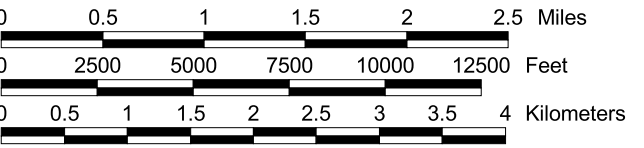
Streams

-  Perennial
-  Intermittent

-  Water Bodies
-  Watershed Boundry



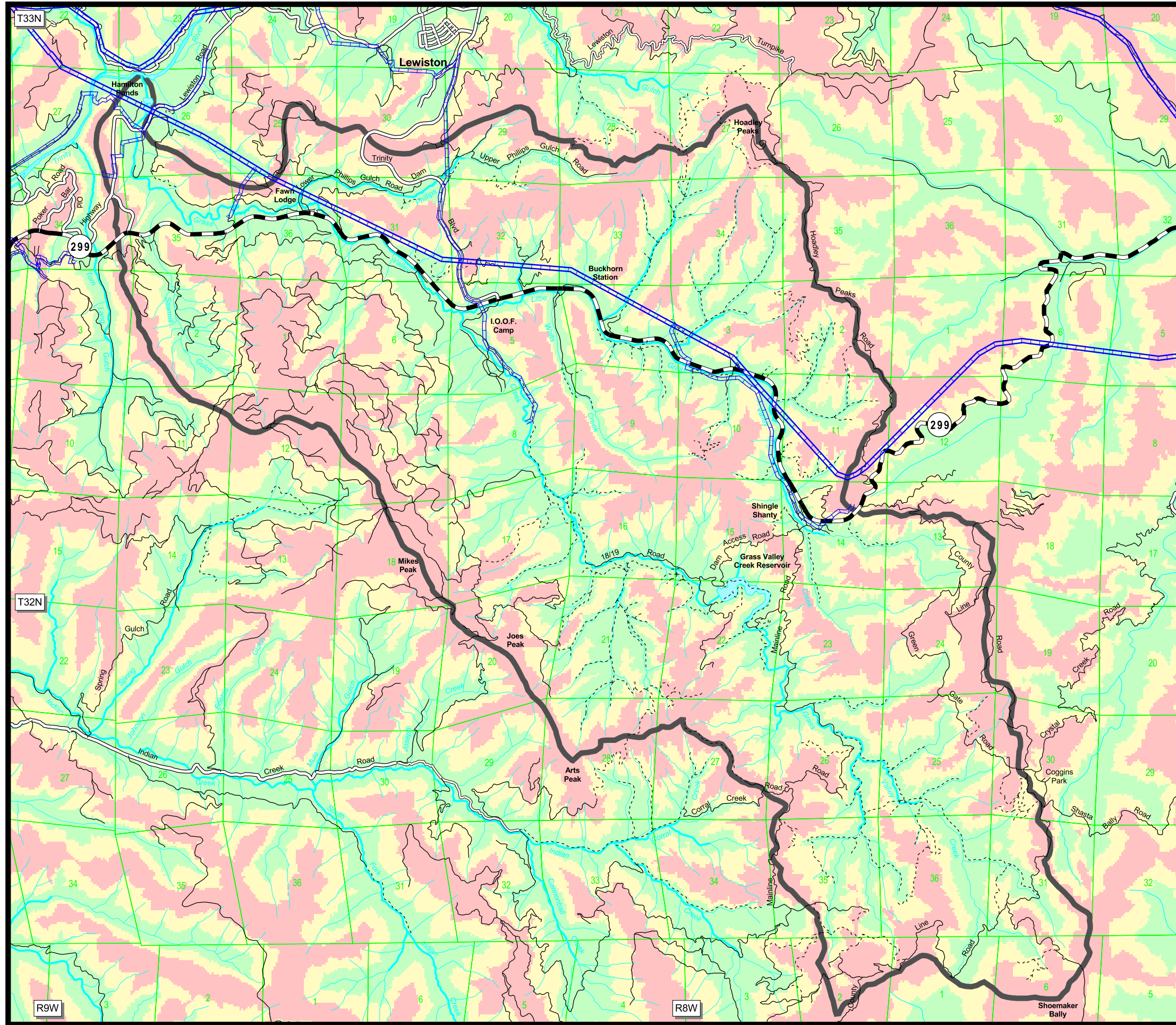
Scale: 1 = 60,000



Presented By
Kenneth Baldwin, RPF 1855

Prepared By
Trinity County Resource Conservation District
December 31, 2002

Grass Valley Creek Slope Position



Slope Position

- Lower 1/3
- Middle 1/3
- Upper 1/3

Roads

- Highway
- Paved
- Rocked
- Native
- Undrivable

Streams

- Perennial
- Intermittent

Water Bodies

- Water Bodies

Watershed Boundry

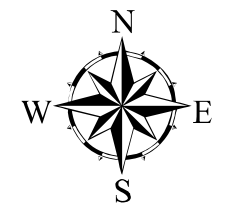
- Watershed Boundry

Powerlines

- High Voltage
- Low Voltage

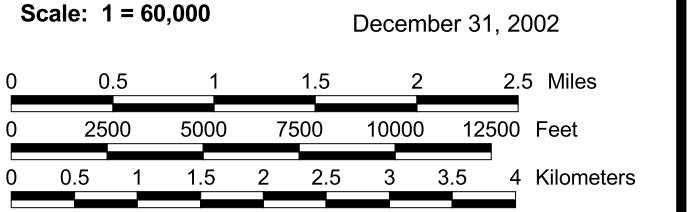
Sections

- Sections

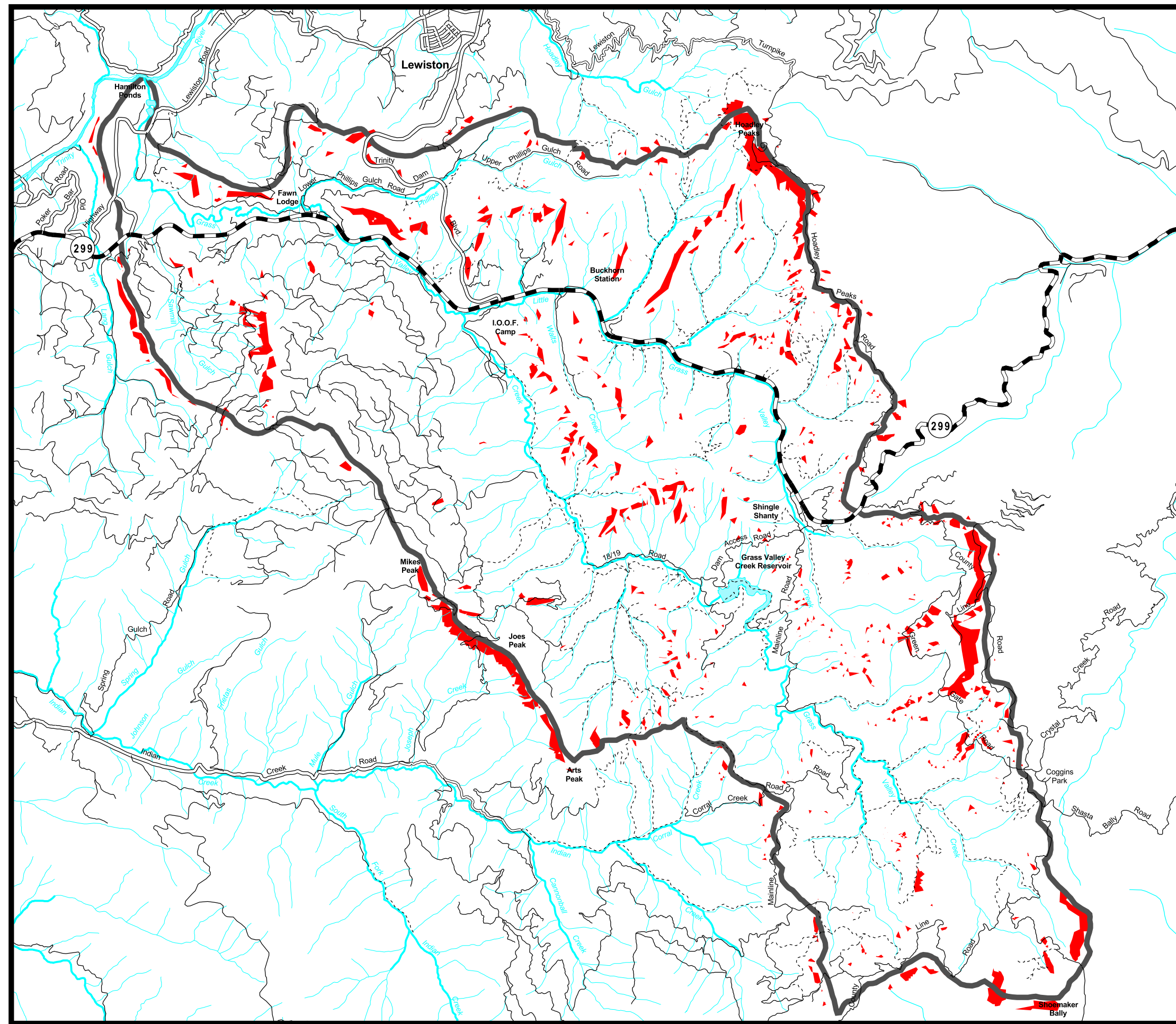


Presented By
Kenneth Baldwin, RPF 1855

Prepared By
Trinity County Resource Conservation District
 December 31, 2002



Grass Valley Creek High Fire Hazard Zones



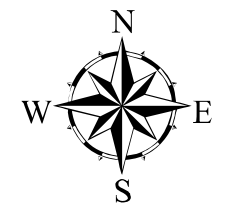
Fire Hazard Zones
 High (South & West + Upper 1/3 + > 40% Slopes)

Roads
 Highway
 Paved
 Rocked
 Native
 Undrivable

Streams
 Perennial
 Intermittent

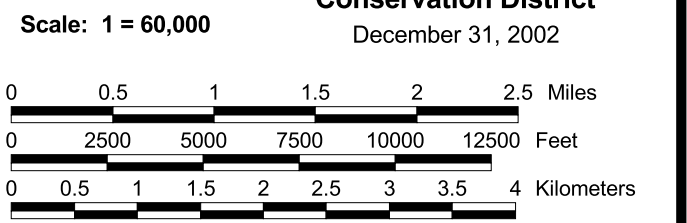
Water Bodies
 Water Bodies

Watershed Boundry
 Watershed Boundry

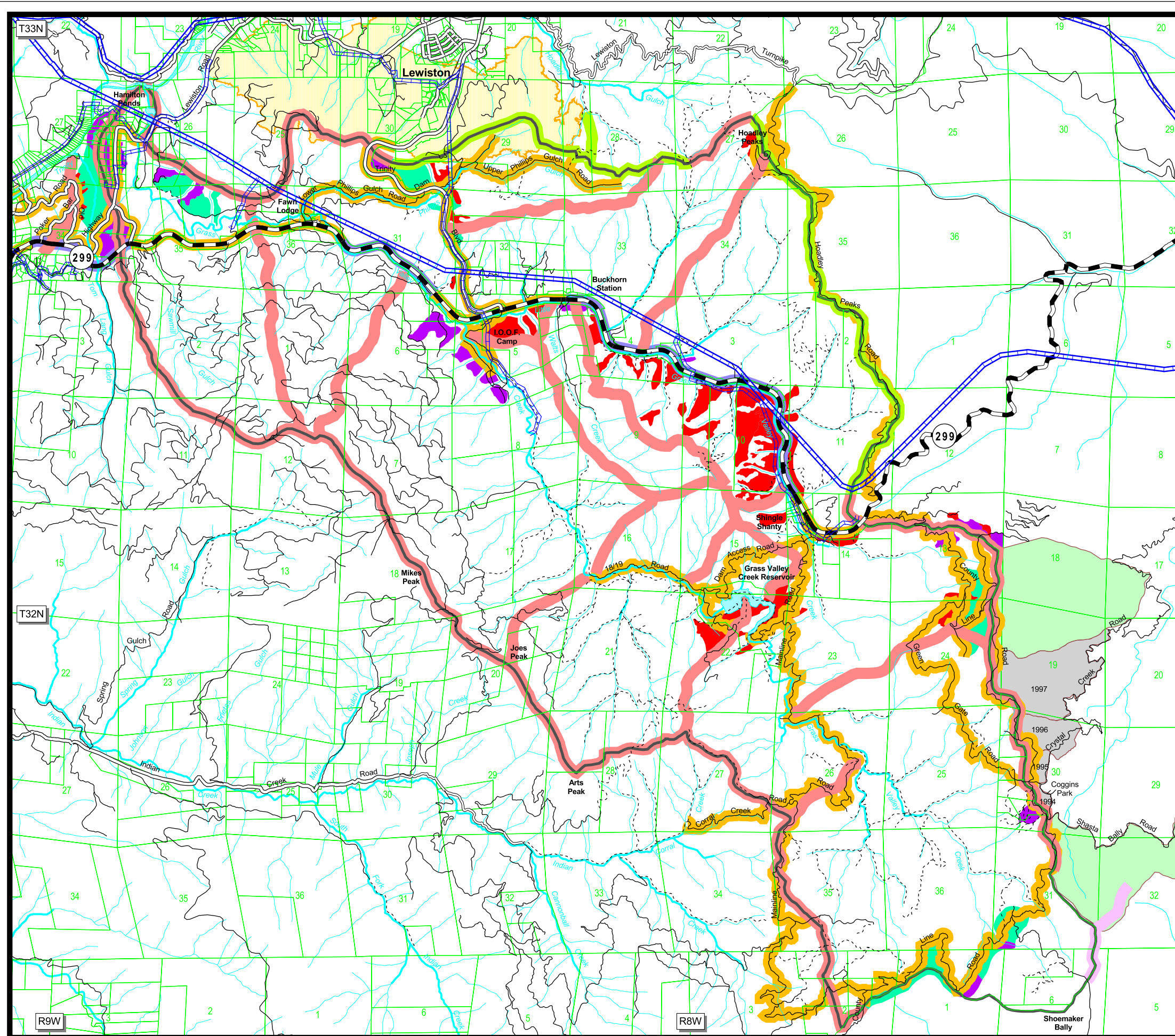


Presented By
Kenneth Baldwin, RPF 1855

Prepared By
Trinity County Resource Conservation District
 December 31, 2002



Grass Valley Creek Fire Presuppression Projects



Project Types

- Proposed Shaded Fuelbreak
- Existing Shaded Fuelbreak
- Proposed Roadside Fuelbreak
- Existing Roadside Fuelbreak
- Existing Fuelbreak
- Precommercial / Sub-Merchantable Harvest
- Commercial Harvest
- Brushfield Treatment

Whiskeytown Prescription Burns

- Completed
- Planned

Lowden Fire Area

Roads

- Highway
- Paved
- Rocked
- Native
- Undrivable

Streams

- Perennial
- Intermittent

Water Bodies

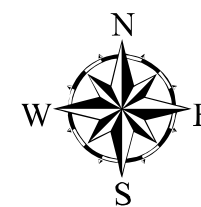
- Water Bodies
- Watershed Boundary

Powerlines

- High Voltage
- Low Voltage

Parcels/Sections

- Parcels/Sections



Presented By
Kenneth Baldwin, RPF 1855

Prepared By
**Trinity County Resource
Conservation District**

December 31, 2002

Scale: 1 = 60,000

