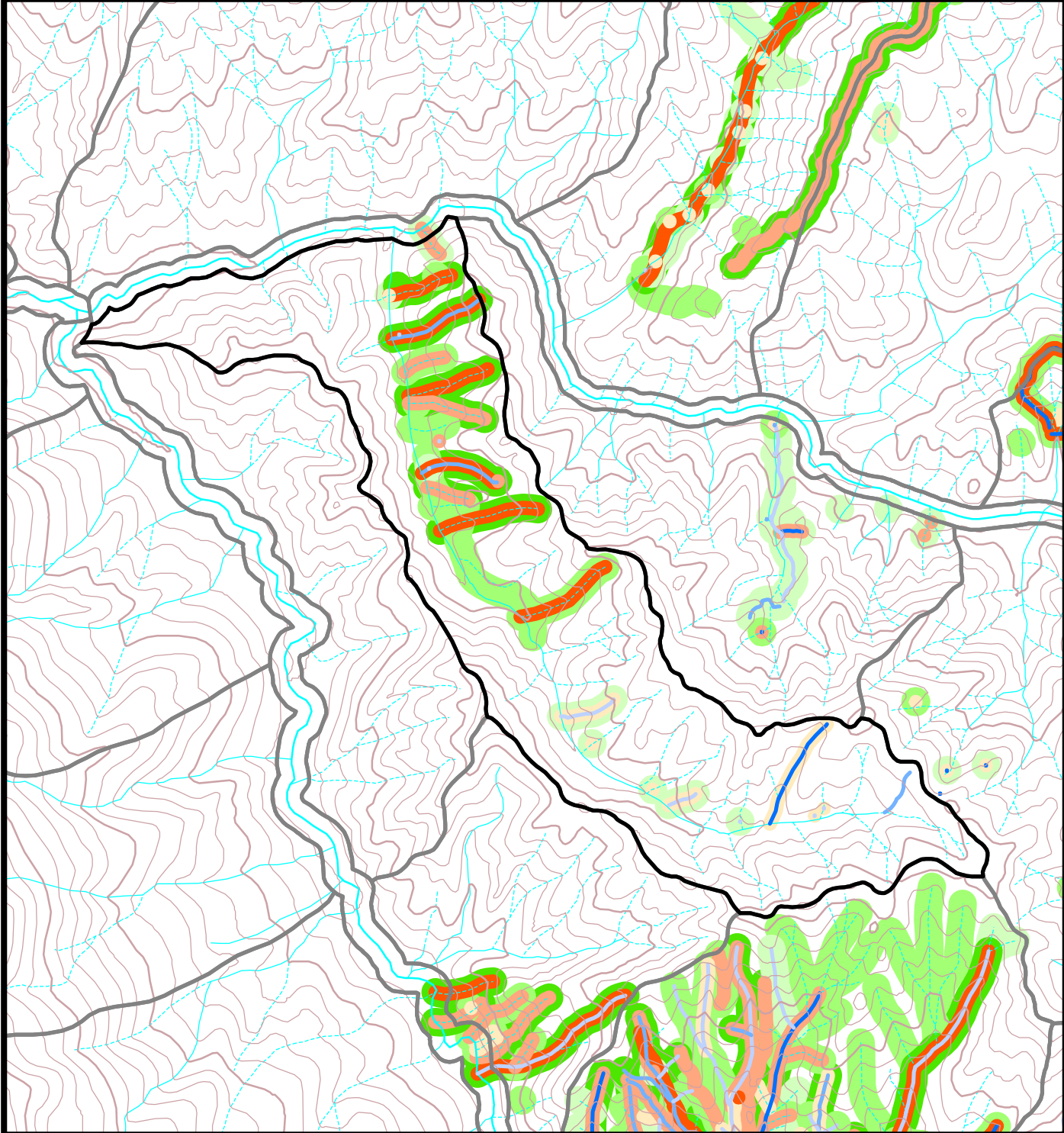


Appendix E-12 Grass Valley Creek Subwatershed 21 Planting Densities



Watershed Boundaries

Grass & Forbs

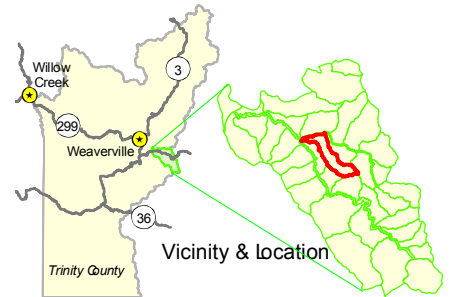
- High (≥ 1000)
- Medium (500-1000)
- Low (1-500)

Shrubs

- High (≥ 500)
- Medium (100-500)
- Low (1-100)

Conifers & Hardwoods

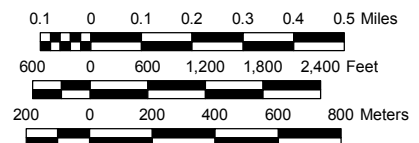
- High (≥ 2000)
- Medium (500-2000)
- Low (1-500)



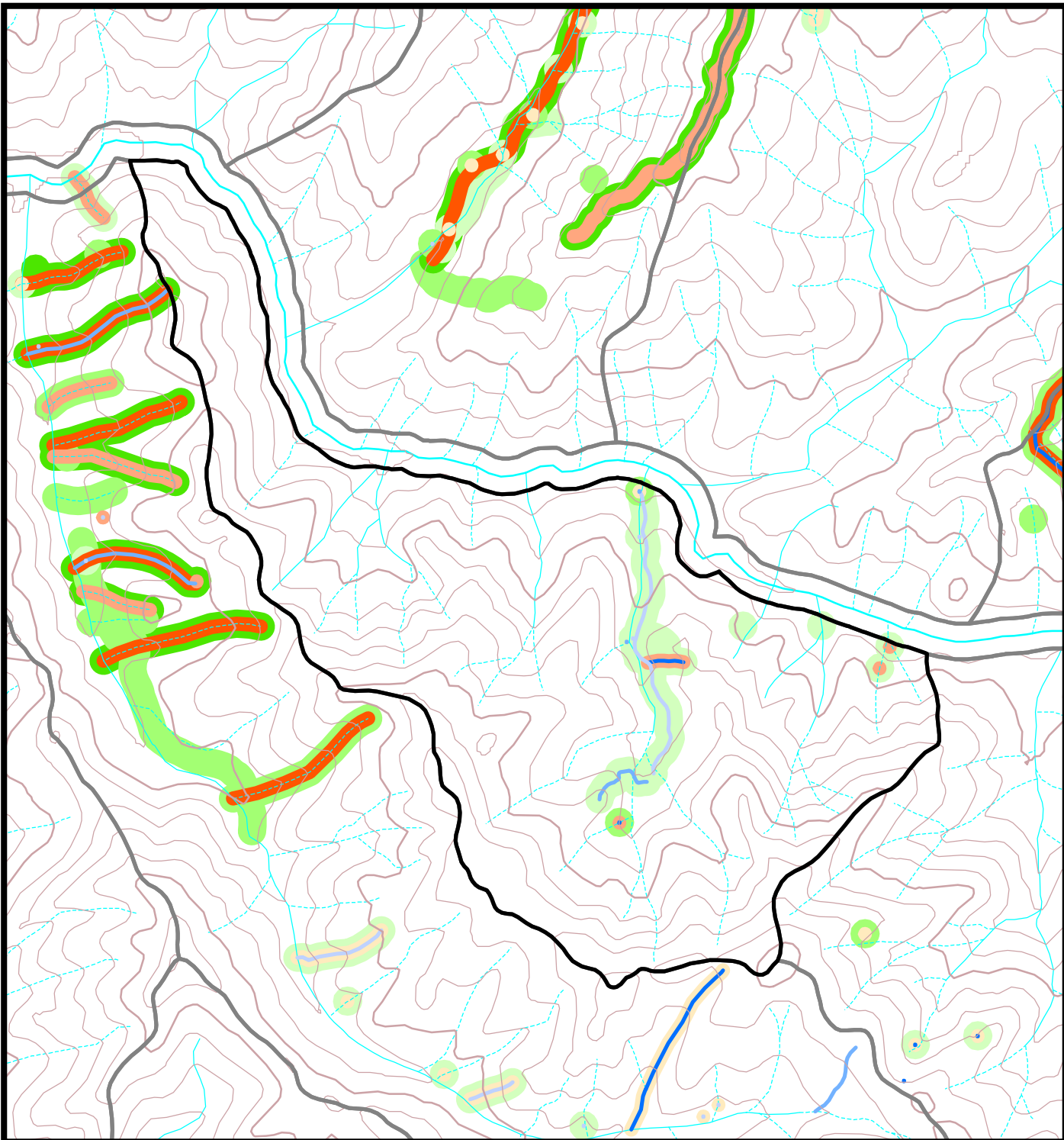
Prepared By
**Trinity County Resource
Conservation District**
May 26, 2005

Scale: 1 = 24,000

GVC21_Planting-Density_11x8-5.mxd






Appendix E-13 Grass Valley Creek Subwatershed 22 Planting Densities






 Watershed Boundaries




Grass & Forbs

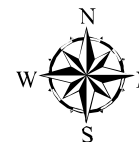
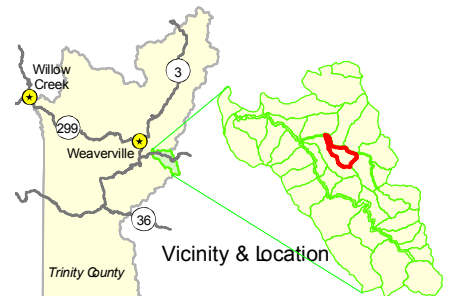
 High (≥ 1000)
 Medium (500-1000)
 Low (1-500)

Shrubs

 High (≥ 500)
 Medium (100-500)
 Low (1-100)

Conifers & Hardwoods

 High (≥ 2000)
 Medium (500-2000)
 Low (1-500)



Prepared By
**Trinity County Resource
 Conservation District**
 May 26, 2005

Scale: 1 = 15,000

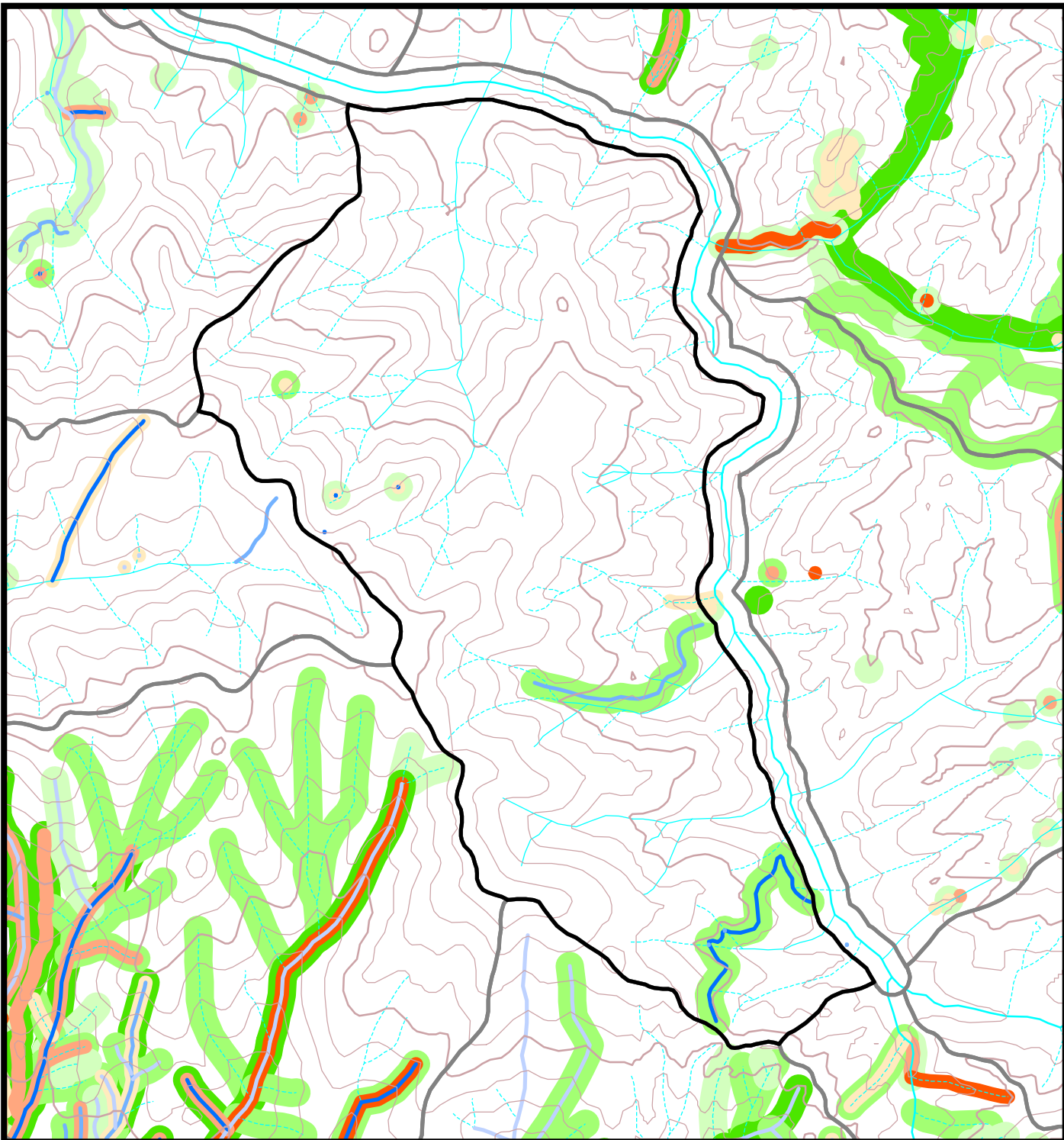
GVC-22_Planting-Density_11x8-5.mxd


0.05 0 0.05 0.1 0.15 0.2 0.25 0.3 0.35 Miles

300 0 300 600 900 1,200 1,500 1,800 Feet




100 0 100 200 300 400 500 Meters

Appendix E-14 Grass Valley Creek Subwatershed 23 Planting Densities






 **Watershed Boundaries**




Grass & Forbs

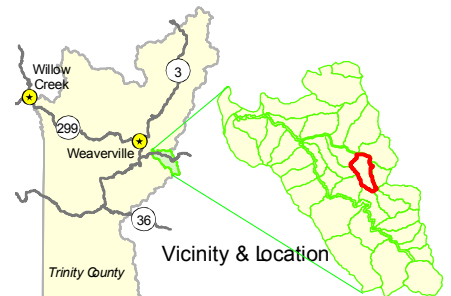
-  High (≥ 1000)
-  Medium (500-1000)
-  Low (1-500)

Shrubs

-  High (≥ 500)
-  Medium (100-500)
-  Low (1-100)

Conifers & Hardwoods

-  High (≥ 2000)
-  Medium (500-2000)
-  Low (1-500)



Prepared By
**Trinity County Resource
Conservation District**
May 26, 2005

Scale: 1 = 15,000

GVC-23_Planting-Density_11x8-5.mxd

0.05 0 0.05 0.1 0.15 0.2 0.25 0.3 0.35 Miles

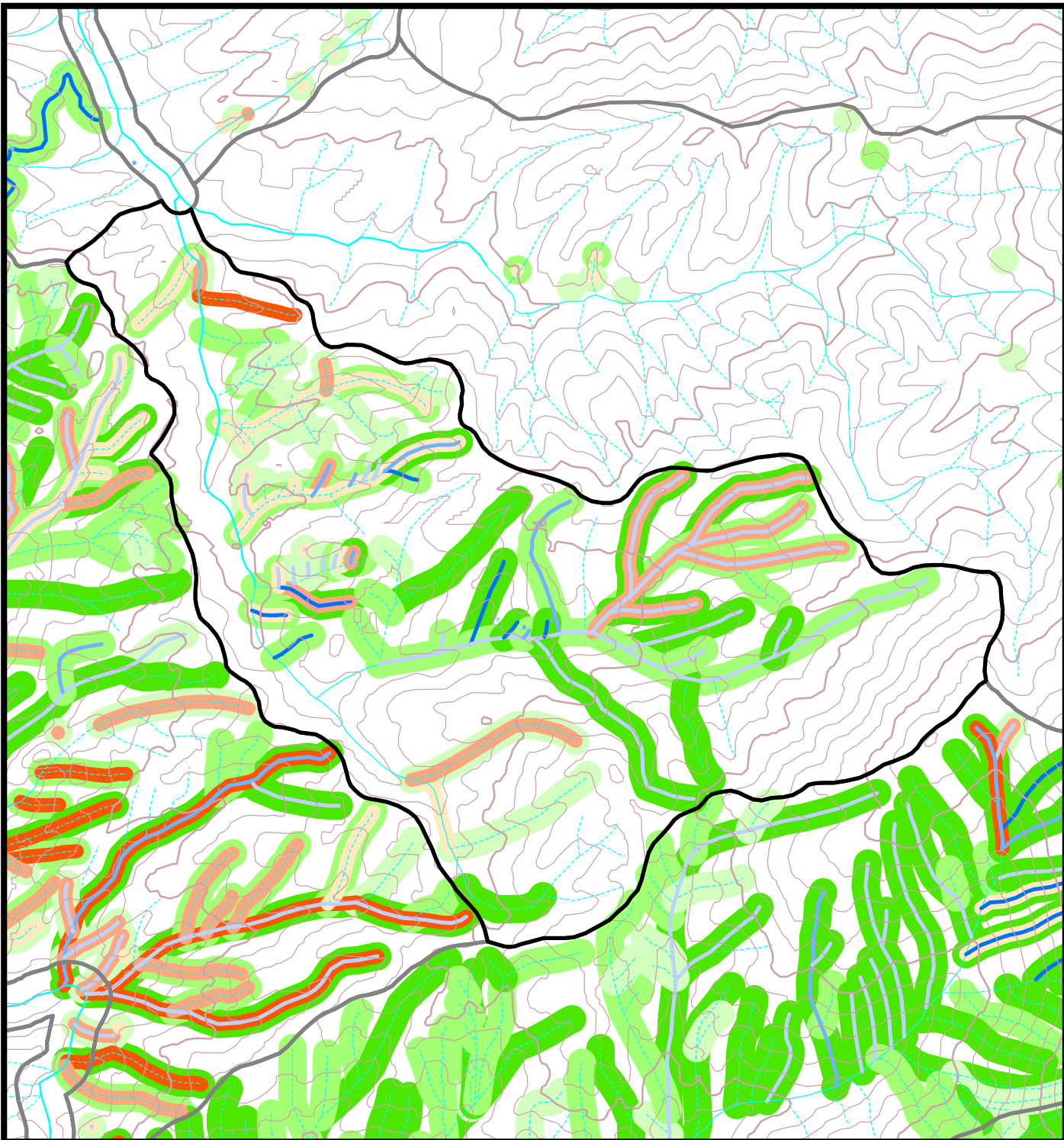
300 0 300 600 900 1,200 1,500 1,800 Feet

100 0 100 200 300 400 500 Meters


Appendix E-15


Grass Valley Creek Subwatershed 24

Planting Densities

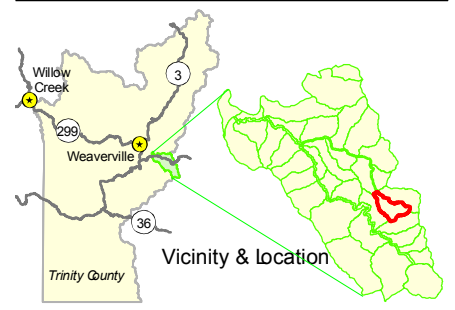


-  **Watershed Boundaries**

- Grass & Forbs**
 -  High (≥ 1000)
 -  Medium (500-1000)
 -  Low (1-500)

- Shrubs**
 -  High (≥ 500)
 -  Medium (100-500)
 -  Low (1-100)

- Conifers & Hardwoods**
 -  High (≥ 2000)
 -  Medium (500-2000)
 -  Low (1-500)



Prepared By
Trinity County Resource Conservation District
 May 26, 2005
GVC-24_Planting-Density_11x8-5.mxd

Scale: 1 = 15,000

0.05 0 0.05 0.1 0.15 0.2 0.25 0.3 0.35 Miles

300 0 300 600 900 1,200 1,500 1,800 Feet

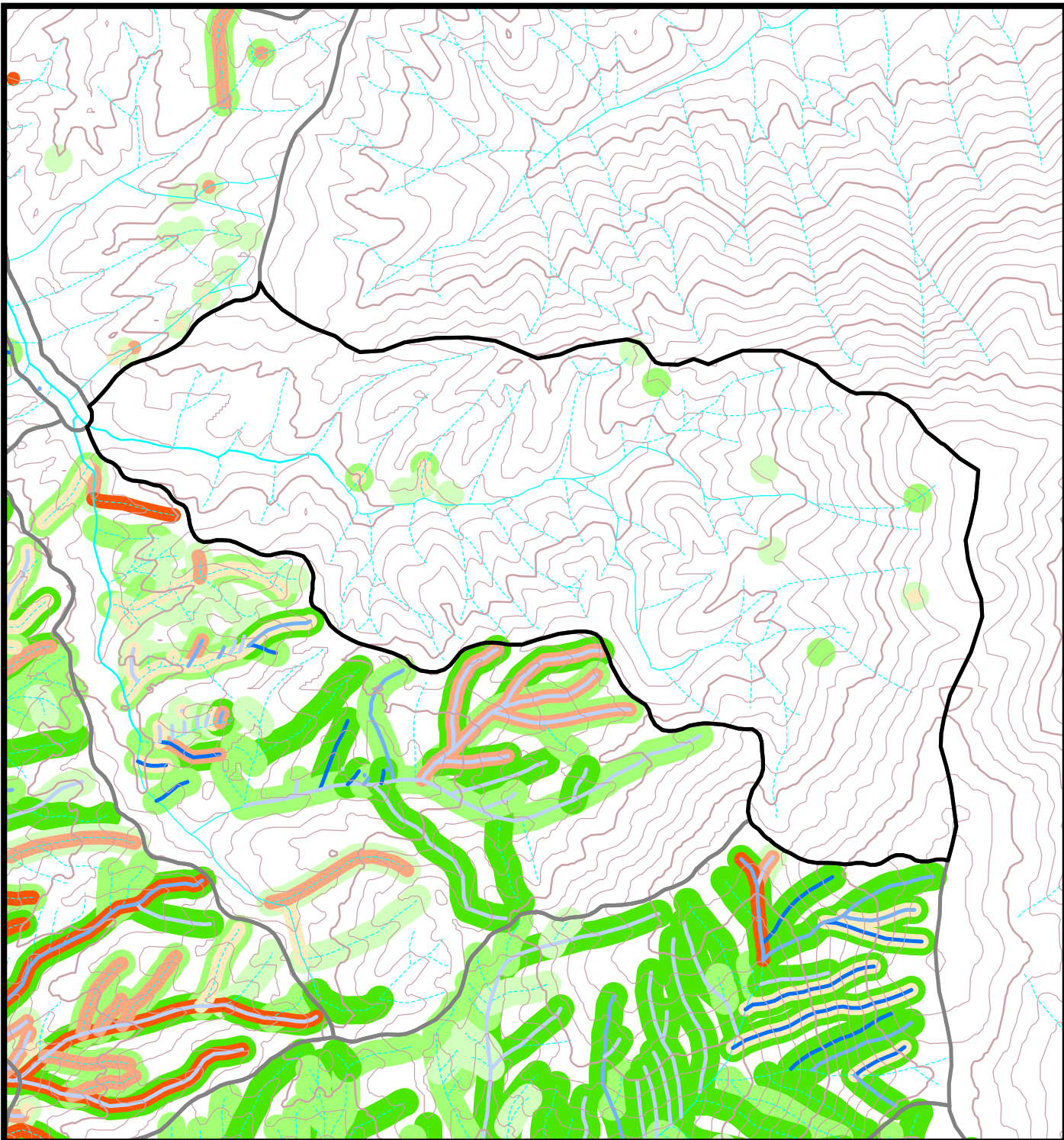
100 0 100 200 300 400 500 Meters

K.D.S.

Appendix E-16

Grass Valley Creek Subwatershed 25

Planting Densities



Watershed Boundaries

Grass & Forbs

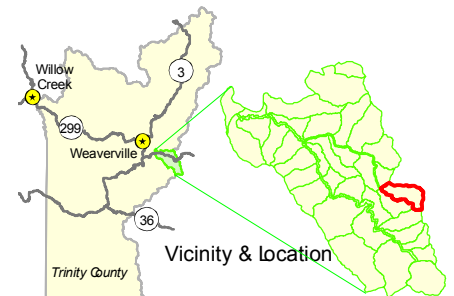
- High (≥ 1000)
- Medium (500-1000)
- Low (1-500)

Shrubs

- High (≥ 500)
- Medium (100-500)
- Low (1-100)

Conifers & Hardwoods

- High (≥ 2000)
- Medium (500-2000)
- Low (1-500)



Prepared By
Trinity County Resource Conservation District
 May 26, 2005

Scale: 1 = 18,000

0.1 0 0.1 0.2 0.3 0.4 Miles

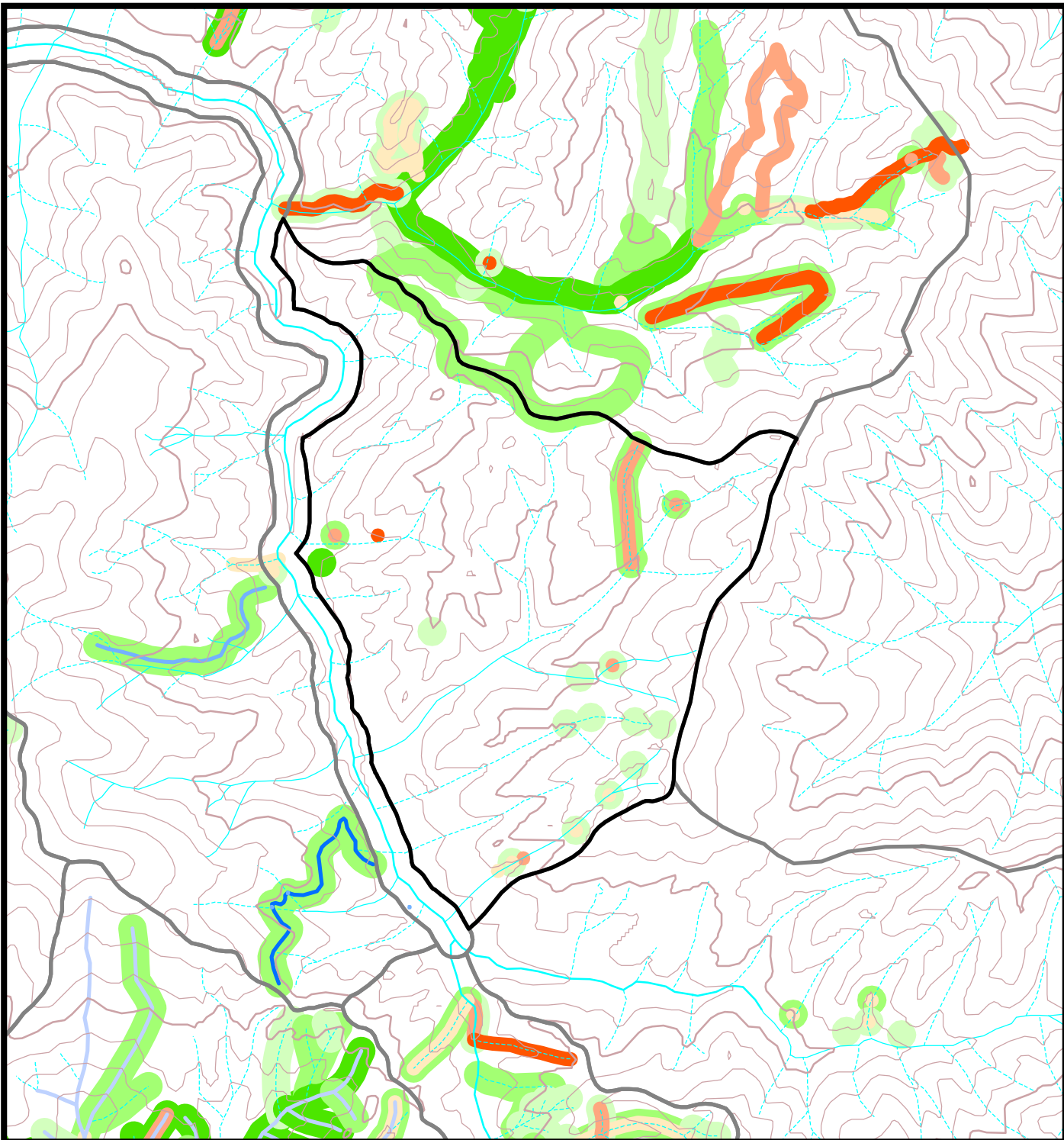
600 0 600 1,200 1,800 Feet



200 0 200 400 600 Meters

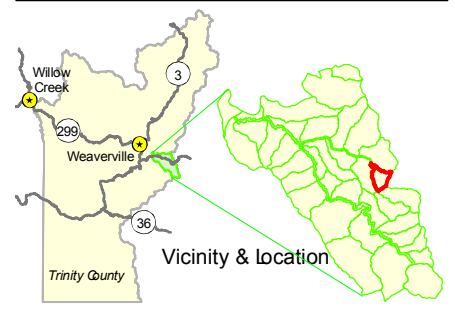
Appendix E-17

Grass Valley Creek Subwatershed 26

Planting Densities



-  **Watershed Boundaries**
- Grass & Forbs**
 -  High (≥ 1000)
 -  Medium (500-1000)
 -  Low (1-500)
- Shrubs**
 -  High (≥ 500)
 -  Medium (100-500)
 -  Low (1-100)
- Conifers & Hardwoods**
 -  High (≥ 2000)
 -  Medium (500-2000)
 -  Low (1-500)



Prepared By
Trinity County Resource Conservation District
 May 26, 2005
GVC-26_Planting-Density_11x8-5.mxd


Scale: 1 = 15,000

0.05 0 0.05 0.1 0.15 0.2 0.25 0.3 0.35 Miles




300 0 300 600 900 1,200 1,500 1,800 Feet

100 0 100 200 300 400 500 Meters




Appendix E-18 Grass Valley Creek Subwatershed 27 Planting Densities

 Watershed Boundaries




Grass & Forbs

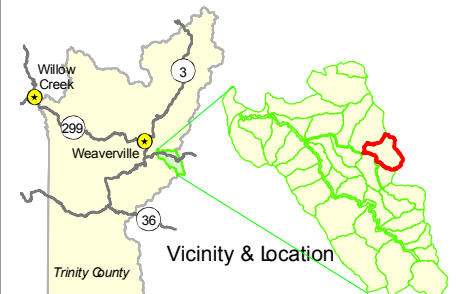
 High (≥ 1000)
 Medium (500-1000)
 Low (1-500)

Shrubs

 High (≥ 500)
 Medium (100-500)
 Low (1-100)

Conifers & Hardwoods

 High (≥ 2000)
 Medium (500-2000)
 Low (1-500)



Prepared By
**Trinity County Resource
 Conservation District**
 May 26, 2005

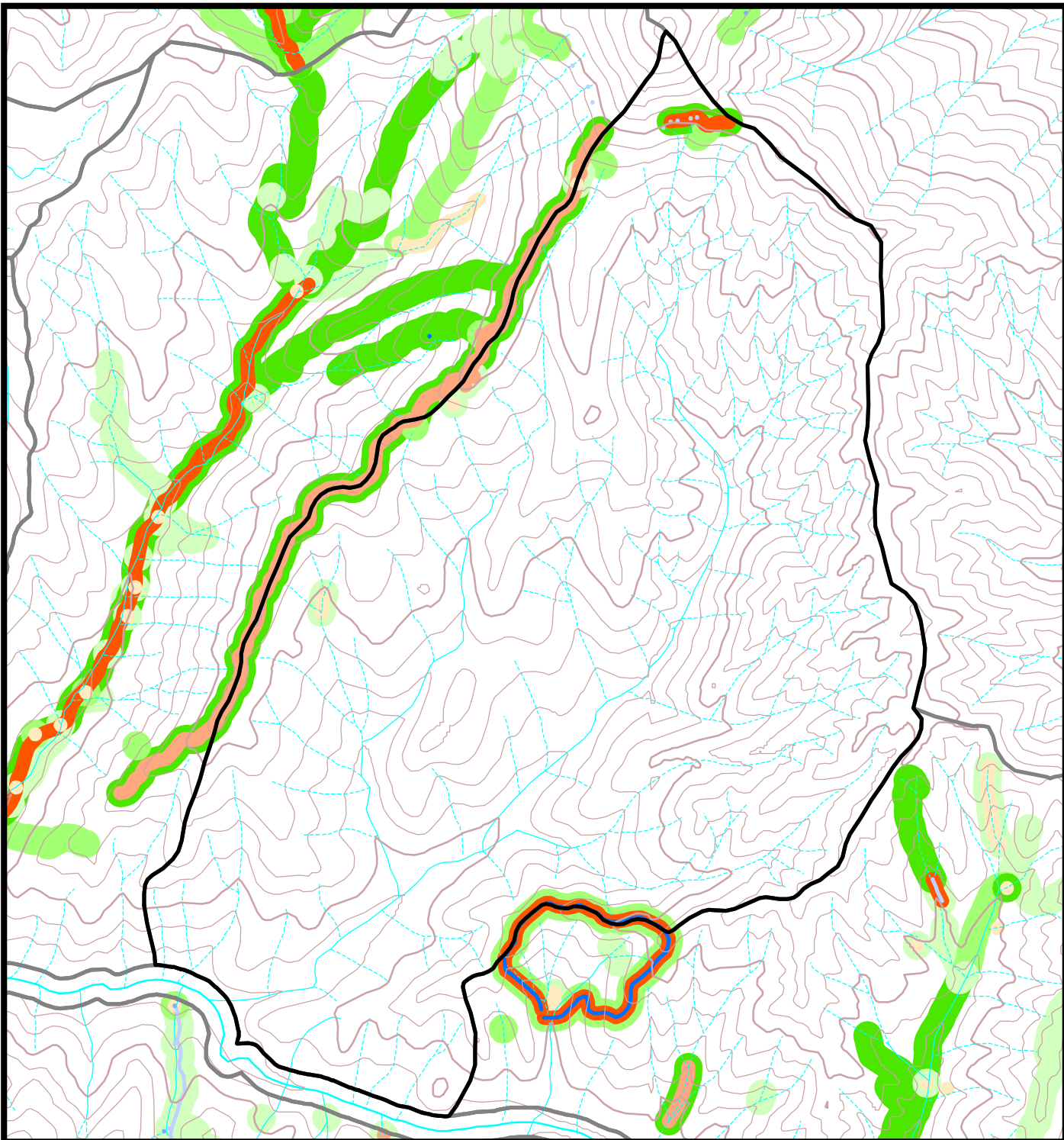
Scale: 1 = 15,000


0.05 0 0.05 0.1 0.15 0.2 0.25 0.3 0.35 Miles

300 0 300 600 900 1,200 1,500 1,800 Feet




100 0 100 200 300 400 500 Meters

Appendix E-19 Grass Valley Creek Subwatershed 28 Planting Densities






 **Watershed Boundaries**




Grass & Forbs

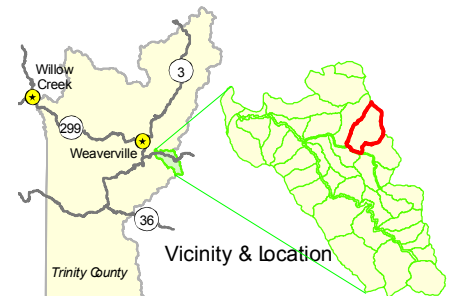
-  High (≥ 1000)
-  Medium (500-1000)
-  Low (1-500)

Shrubs

-  High (≥ 500)
-  Medium (100-500)
-  Low (1-100)

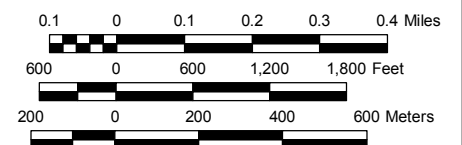
Conifers & Hardwoods

-  High (≥ 2000)
-  Medium (500-2000)
-  Low (1-500)



Prepared By
**Trinity County Resource
Conservation District**
May 26, 2005

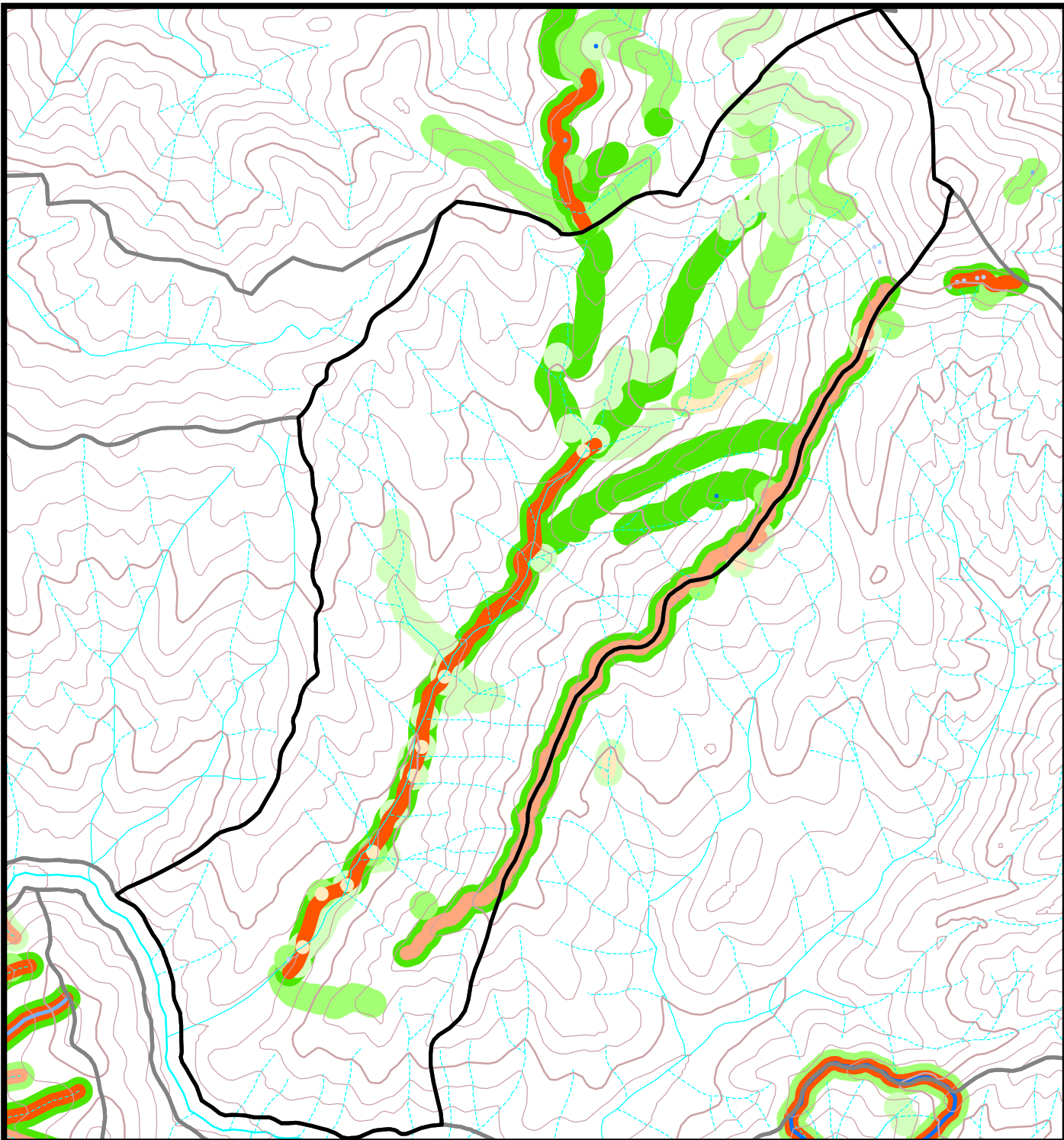
Scale: 1 = 18,000



Appendix E-20

Grass Valley Creek Subwatershed 29

Planting Densities

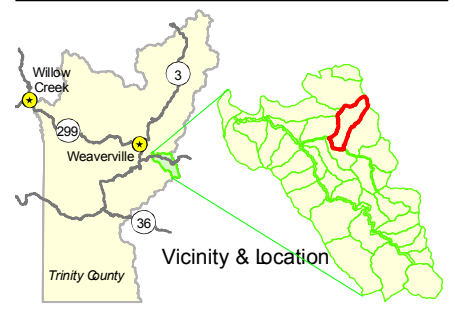


Watershed Boundaries

Grass & Forbs
 High (≥ 1000)
 Medium (500-1000)
 Low (1-500)

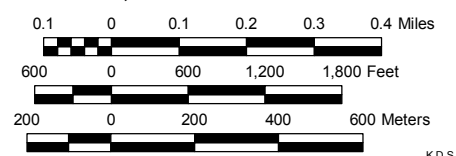
Shrubs
 High (≥ 500)
 Medium (100-500)
 Low (1-100)

Conifers & Hardwoods
 High (≥ 2000)
 Medium (500-2000)
 Low (1-500)



Prepared By
Trinity County Resource Conservation District
 May 26, 2005
 GVC-29_Planting-Density_11x8-5.mxd

Scale: 1 = 18,000






Appendix E-21

Grass Valley Creek Subwatershed 40




Planting Densities

 Watershed Boundaries




Grass & Forbes

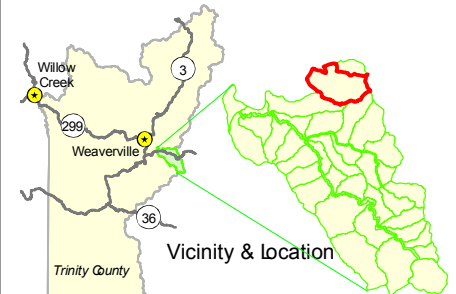
 High (≥ 1000)
 Medium (500-1000)
 Low (1-500)

Shrubs

 High (≥ 500)
 Medium (100-500)
 Low (1-100)

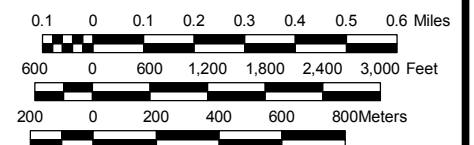
Conifers & Hardwoods

 High (≥ 2000)
 Medium (500-2000)
 Low (1-500)



Prepared By
Trinity County Resource Conservation District
 May 26, 2005

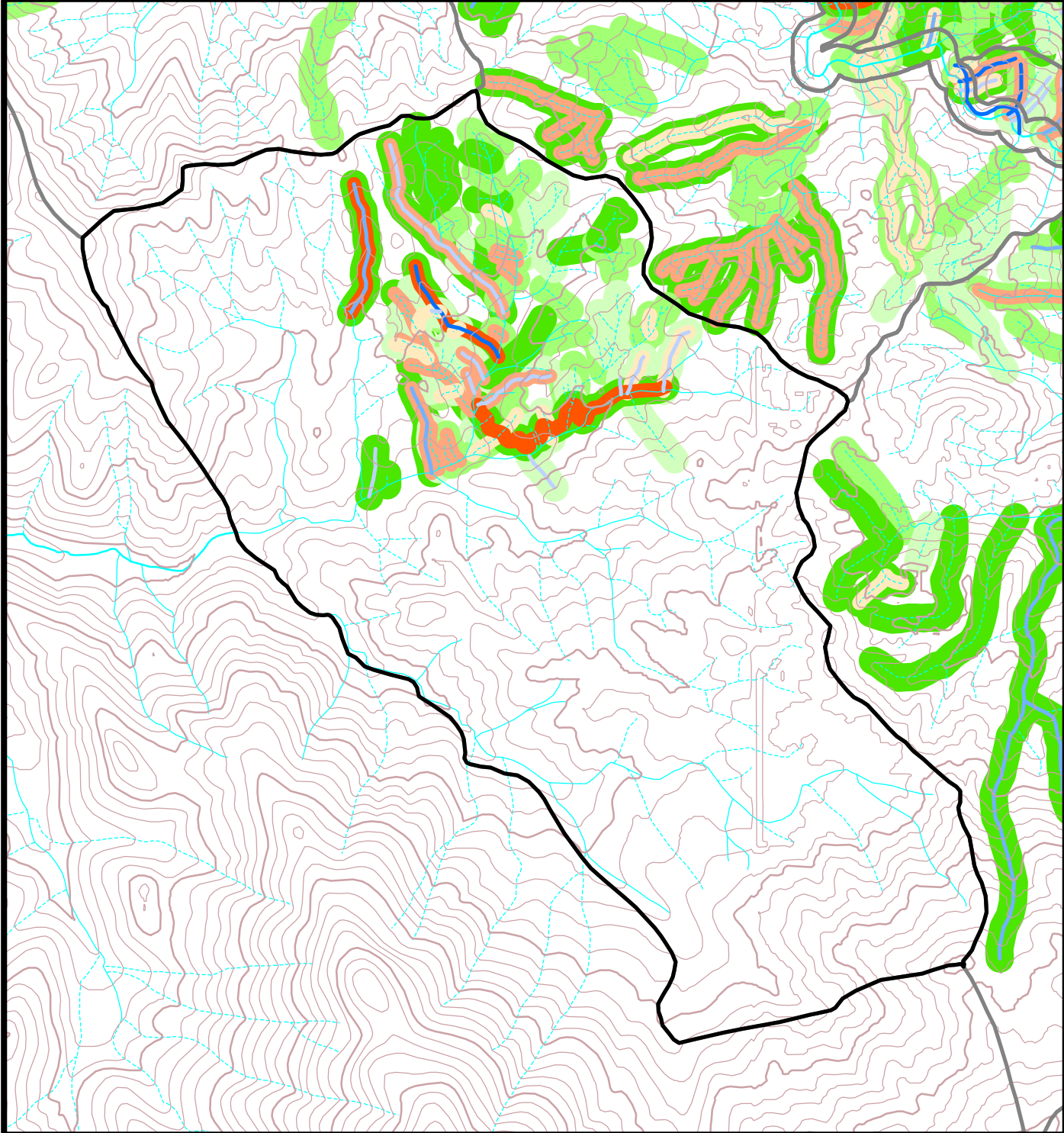
Scale: 1 = 24,000





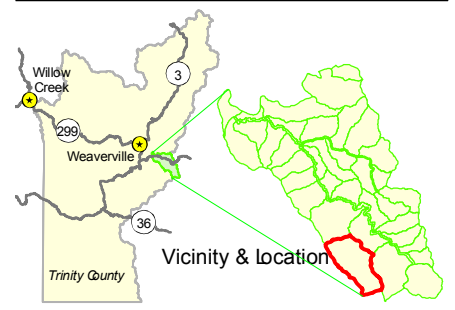
Appendix E-22

Grass Valley Creek Subwatershed 41

Planting Densities




-  **Watershed Boundaries**
- Grass & Forbs**
 -  High (≥ 1000)
 -  Medium (500-1000)
 -  Low (1-500)
- Shrubs**
 -  High (≥ 500)
 -  Medium (100-500)
 -  Low (1-100)
- Conifers & Hardwoods**
 -  High (≥ 2000)
 -  Medium (500-2000)
 -  Low (1-500)

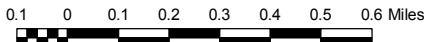


Prepared By
Trinity County Resource Conservation District
May 26, 2005
GVC-41_Planting-Density_11x8-5.mxd

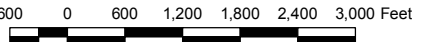
Scale: 1 = 24,000



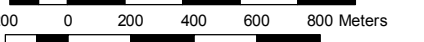
N
W E
S



0.1 0 0.1 0.2 0.3 0.4 0.5 0.6 Miles



600 0 600 1,200 1,800 2,400 3,000 Feet



200 0 200 400 600 800 Meters

K.D.S.